

- VIDEO DOOR ENTRY SYSTEMS
- AUTOMATIC GATE SYSTEMS
- TELEPHONE SYSTEMS
- C.C.T.V.



The Petrarca series includes a range of monitors for use with interphones and telephones of the same series.

Installation of the monitors together with the appropriate interphones or telephones can be as wall-mounted units (on back plates) or as desk-top mounted units (with conversion kit).

Furthermore the wall-mounted installation with interphones does not require a flush-mounting back box since the monitor interconnection board simply fits into the appropriate space on the interphone.

This range of monitors can be used for video door entry systems with Sound System call and AC call.



Technical specifications

Specifications common to types 6000, 6003

Available colours: white (standard colour, e.g. type 6000), anthracite grey (./21, e.g. type 6000/21), titanium grey (./37, e.g. type 6000/37)

Material: ABS

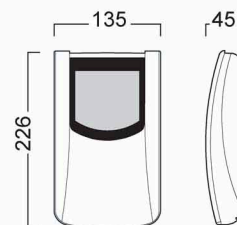
Installation: requires back-plate or desk-top kit

Supplied: monitor interconnection card

Video input signal: 1Vpp on 75Ohm

Supply voltage: from 15V D.C. to 20V D.C.

Operating temperature: from 0 to 40°C



TYPE	6000	6003
Model	(B/W model)	(colour model)
Applications	Video door entry system with Sound System call Video door entry system with AC call DigiBus video door entry system Video door entry system with Sound System call and without coaxial cable	Video door entry system with Sound System call Video door entry system with AC call DigiBus video door entry system
Screen	Low profile 4" B/W CRT	Low profile 4" colour LCD
Controls	Brightness, contrast	Brightness, colour
Video Standard	CCIR 625 lines, 50 panels (to EIA standard requirements)	PAL
Number of wires for standard connection	2 common wires + coaxial (or twisted pair)	2 common wires + coaxial
Compatible power supplies	Type 6680, 6680/V03, 6568, 6583, 6582	Type 6680, 6680/V03, 6583, 6582
Compatible interphones	Type 6200, 6201	Type 6200
Notes	The monitor is supplied with a switch for selection of either coaxial cable or twisted pair for video signal	



White



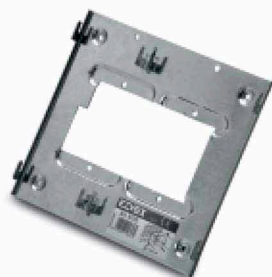
anthracite grey



titanium grey



Accessories for Petrarca monitors



Type: 6145

Description: back-plate for surface wall-mounted installation of monitor (6000, 6003) and interphone (6200, 6201)

Bracket dimensions: 213x187 mm

Monitor+interphone dimensions (WxHxD):

223x226x65 mm

Equipment supplied: 4 screws for wall mounting



Type: 6A47

Description: back-plate for semi flush-mounted wall installation of single monitor (6000, 6003)

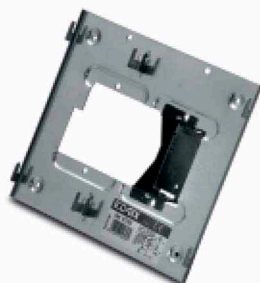
Bracket dimensions: 123x187 mm

Monitor+interphone dimensions (WxHxD):

135x226x45 mm

Equipment supplied: 4 screws for wall mounting

Notes: requires 3-module back box to contain interconnection card supplied with monitor



Type: 6146

Description: back-plate for semi flush-mounted wall installation of monitor (6000, 6003) and telephone (3562)

Bracket dimensions: 213x187 mm

Monitor+telephone dimensions (WxHxD):

223x226x65 mm

Equipment supplied: 4 screws for wall mounting

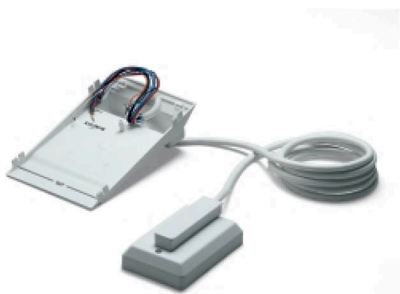
Notes: requires 3-module back box to contain interconnection card supplied with monitor





Sound system®

Video Door Entry Systems



Type: 6A41

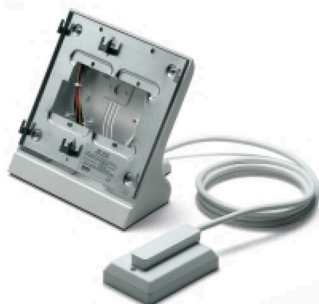
Description: desk-top conversion kit for single monitor (6000, 6003)

Colours: white (type 6A41), anthracite grey (type 6A41/21), titanium grey (type 6A41/37)

Material: ABS

Monitor+desk-top conversion kit dimensions (WxHxD): 135x80x200 mm

Notes: 2 metres of cable with **8 wires**
+ 1 coaxial cable, socket with removable plug



Type: 6142

Description: desk-top conversion kit for monitor (6000, 6003) and interphone (6200, 6201)

Colours: white (type 6142), anthracite grey (type 6142/21), titanium grey (type 6142/37)

Material: ABS

Monitor+desk-top conversion kit dimensions (WxHxD): 223x235x200 mm

Notes: 2 metres of cable with **12 wires**
+ 1 coaxial cable, socket with removable plug

Type: 6A42

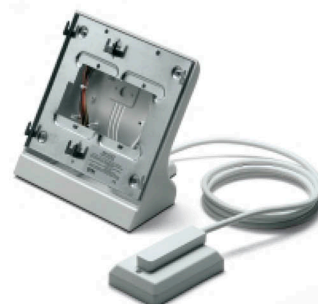
Description: desk-top conversion kit for monitor (6000, 6003) and interphone (6200, 6201)

Colours: white (type 6A42), anthracite grey (type 6A42/21), titanium grey (type 6A42/37)

Material: ABS

Monitor + interphone dimensions + desk-top conversion kit (WxHxD): 223x235x200 mm

Notes: 2 metres of cable with **26 wires**
+ 1 coaxial cable, socket with removable plug



Type: 6143

Description: desk-top conversion kit for single monitor (6000, 6003) and telephone (3562)

Colours: white (type 6143), anthracite grey (type 6143/21), titanium grey (type 6143/37)

Material: ABS

Monitor + telephone dimensions + desk-top conversion kit: 223x235x200

Notes: 2 metres of cable with **12 wires**
+ 1 coaxial cable and telephone cable with plug, socket with removable plug



Type: 6160

Description: additional power supply for desk-top conversion kits type 6142, 6A42 and 6143

Supply voltage: 230V 50Hz (different voltages also available: 110V A.C., 117V A.C. and 240V A.C.)

Notes: used in the event of connections of multiple monitors in parallel or on longer connection lines or in the case of excessive voltage drops